



## CONTROLLERS

The 12V LED strips accessories are dimmers, RGB controllers - available in infra and radio frequency versions - to ensure convenient usage. All LED strips are suitable for brightness level control.

## RGB CONTROLLERS

Devices and accessories to control RGB LED strips. Easy to connect and to use. The user can select from several methods: fade, strobe, blinking and other static methods. LED strips can be controlled from anywhere with the help of a long range radio controller or with a simple infra controller. Latter can control the strips only if it is pointed at the sensor.

## RADIO CONTROLLER

### 17 keys



EAN	5999562286982
product code	ABLS12V17KRGB-72W-RFC
color temp.	RGB
watt	72W
IP	20
voltage	DC12V
carton EAN	5999562286999

### 24 keys



EAN	5999562286920
product code	ABLS12V24KRGB-72W-RFC
color temp.	RGB
watt	72W
IP	20
voltage	DC12V
carton EAN	5999562286937

### 28 keys



EAN	5999562287002
product code	ABLS12V28KRGB-144W-RFC
color temp.	RGB
watt	144W
IP	20
voltage	DC12V
carton EAN	5999562287019

### 40 keys



EAN	5999562284834
product code	ABLS12V40KRGBW-96W-RFC
color temp.	RGB+W
watt	96W
IP	20
voltage	DC12V ~ 24V
carton EAN	5999562284841

## touch controller



EAN	5999097907666
product code	ABLS12V5TKRGB-180W-RFC
color temp.	RGB
watt	180W/360W
IP	20
voltage	DC12V ~ 24V
carton EAN	5999097907673



EAN	5999097907642
product code	ABLS12V6TKRGB-216W-RFC
color temp.	RGB
watt	216W/432W
IP	20
voltage	DC12V ~ 24V
carton EAN	5999097907659



## INFRA CONTROLLER | 24 keys



EAN	5999562286487
product code	ABLS12V24KRGB-72W-IRC
color temp.	RGB
watt	72W
IP	20
voltage	DC12V
carton EAN	5999562286494

## RGB MINI CONTROLLER



EAN	5999562286944
product code	ABLS12VMRGB-72W-3KW
color temp.	RGB
watt	72W
IP	20
voltage	DC12V
carton EAN	5999562286951



EAN	5999562286968
product code	ABLS12VMRGB-72W-3KDC
color temp.	RGB
watt	72W
IP	20
voltage	DC12V
carton EAN	5999562286975

## RGB SIGNAL AMPLIFIER

The RGB signal amplifiers are also suitable for controlling the operation or adjusting the brightness of the strips. Available with DC plug or as an standalone modul.

### mini 72W

### 144W



EAN	5999562287187
product code	ABLS12VMRGB-72W-AMP
color temp.	RGB
watt	72W
IP	20
voltage	DC12V
carton EAN	5999562287194



EAN	5999562287200
product code	ABLS12VRGB-144W-AMP
color temp.	RGB
watt	144W
IP	20
voltage	DC12V
carton EAN	5999562287217





## DIMMER

### infra controller

The 3 keys controller is suitable for controlling the dimmer and to increase or decrease the brightness level of the 12V LED strips.



EAN	5999562287026
product code	ABLS12V3KDIMM-48W-IRC
color temp.	fix color LED DIMMER
watt	48W
IP	20
voltage	DC12V
carton EAN	5999562287033

### radio controller

These Mini 9 keys RF dimmers have advanced 433 MHz frequency technology. Easy installation and usage, the light intensity can be adjusted to 10 different levels and have memory function. In addition to these useful features, these are small, practical devices.



EAN	5999562287064
product code	ABLS12V9KDIMM-120W-RFC
color temp.	fix color LED DIMMER
watt	120W
IP	20
voltage	DC12V
carton EAN	5999562287071

EAN	5999562287040
product code	ABLS12V9KDIMM-72W-RFC
color temp.	fix color LED DIMMER
watt	72W
IP	20
voltage	DC12V
carton EAN	5999562287057

The light intensity and glimmering can be gradually controlled with a dimmer in case of single-colored strips. They have wireless technology with the possibility of adjusting the brightness.



EAN	5999562287088
product code	ABLS12V2KDIMM-96W-RFC
color temp.	fix color LED DIMMER
watt	96W
IP	20
voltage	DC12V
carton EAN	5999562287095





## mini 3 keys dimmer

The mini 3 keys single-colored controllers have advanced control chips. Suitable for controlling any kinds of LED lightings such as LED strips and other LED devices. The product is low cost, easy to connect and easy to use. The user can adjust the brightness to their own needs. These controllers can be set to eight different dynamic RGB modes. Speed can also be adjusted on a wide scale (10 speed settings in total).



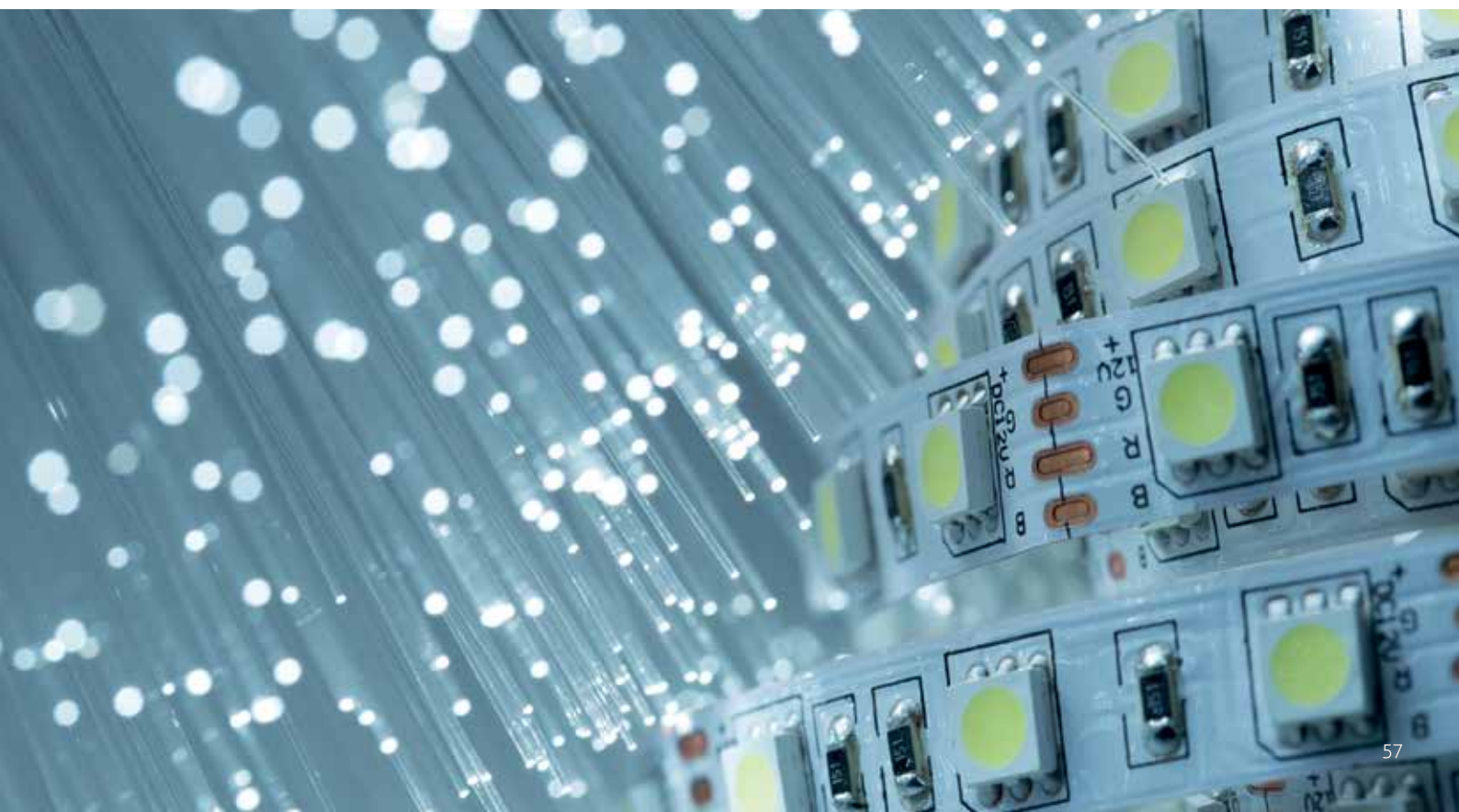
EAN	5999562287101
product code	ABLS12VMDIMM-48W-3KDC
color temp.	DIMM
watt	48W
IP	20
voltage	DC12V
carton EAN	5999562287118

## DC plug with switch

The DC plug with switch is a cable equipped with a DC female and male plug plus an On/Off switch. They can be installed between the power supply and LED strip to turn the LED strip on and off.



EAN	5999562287224
product code	ABLS12VDC-SWITCH
color temp.	on/off switch
IP	20
voltage	DC12V
carton EAN	5999562287231





## 12V ACCESSORIES

The accessories, connectors and cables are useful at the installation of 12V LED strips. With the help of them various ways of connection can be established.

## CABLES, CONNECTORS

### 4-PIN RGB IP20



EAN	5999562287248
product code	ABLS12VRGB-4PINCON-IP20
color temp.	RGB
IP	20
voltage	DC12V
carton EAN	5999562287255

### 4-PIN RGB IP65



EAN	5999562287262
product code	ABLS12VRGB-4PINCON-IP65
color temp.	RGB
IP	65
voltage	DC12V
carton EAN	5999562287279

The 4-PIN solderable connector cables are used to connect controllers and LED strips. Available with IP20 and IP 65 protection.

### 4-PIN-4-PIN RGB



EAN	5999562287446
product code	ABLS12VRGB-4PIN-4PIN-CON
color temp.	RGB
IP	20
voltage	DC12V
carton EAN	5999562287453

### 4-PIN RGB



EAN	5999562287460
product code	ABLS12VRGB-4PIN-WIRE-CON
color temp.	RGB
IP	20
voltage	DC12V
carton EAN	5999562287477

Connector cables to connect LED strips are available in both ready-to-sold and solderable versions.

### RGB 1m connector wire

The ready-to-use 4 PIN connector cables are used for RGB LED strips.



EAN	5999562287521
product code	ABLS12VRGB-4PIN-1M-EXT
color temp.	RGB
IP	20
voltage	DC12V
carton EAN	5999562287538

### RGB short cable

The ready-to-use connector cables are used to link LED strips when they are being installed at surfaces where the strip is being bent.



EAN	5999562287569
product code	ABLS12VRGB-SHORT-EXT
color temp.	RGB
IP	20
voltage	DC12V
carton EAN	5999562287576



## RGB 2Way split controller

The ready-to-use split controllers are suitable for distributing the output signal from the controller to feed two different RGB LED strips.



EAN	5999562287545
product code	ABLS12VRGB-2WAY-SPLIT
color temp.	RGB
IP	20
voltage	DC12V
carton EAN	5999562287552

## 5050 short cable



EAN	5999562287583
product code	ABLS12V5050-SHORT-EXT
color temp.	4000K
IP	20
voltage	DC12V
carton EAN	5999562287590

## 8-10mm connector - female

The 8 and 10mm ready-to-use connectors are used to link power supplies and LED strips.



EAN	5999562287484
product code	ABLS12V3528-8MM-DCCON
color temp.	4000K
IP	20
voltage	DC12V
carton EAN	5999562287491

EAN	5999562287507
product code	ABLS12V5050-10MM-DCCON
color temp.	RGB/4000K
IP	20
voltage	DC12V
carton EAN	5999562287514

## network connector - male

These cables connect LED strips, power supplies, dimmers.



EAN	5999562287408
product code	ABLS12VDC-MALE-PLUG
color temp.	
IP	20
voltage	DC12V
carton EAN	5999562287415

## network connector - female



EAN	5999562287422
product code	ABLS12VDC-FEMALE-PLUG
color temp.	
IP	20
voltage	DC12V
carton EAN	5999562287439





## CONNECTORS

The L or T shaped connectors connect or divide different LED strips in one or two directions.

### „L“ connector



EAN	5999562287286
product code	ABLS12V3528-L-CONNECTOR
color temp.	4000K
IP	20
voltage	DC12V
carton EAN	5999562287293



EAN	5999562287309
product code	ABLS12V5050-L-CONNECTOR
color temp.	4000K
IP	20
voltage	DC12V
carton EAN	5999562287316



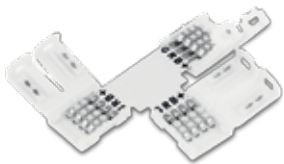
EAN	5999562287323
product code	ABLS12VRGB-L-CONNECTOR
color temp.	RGB
IP	20
voltage	DC12V
carton EAN	5999562287330

### „T“ connector



EAN	5999562287347
product code	ABLS12V3528-T-CONNECTOR
color temp.	4000K
IP	20
voltage	DC12V
carton EAN	5999562287354

EAN	5999562287361
product code	ABLS12V5050-T-CONNECTOR
color temp.	4000K
IP	20
voltage	DC12V
carton EAN	5999562287378



EAN	5999562287385
product code	ABLS12VRGB-T-CONNECTOR
color temp.	RGB
IP	20
voltage	DC12V
carton EAN	5999562287392

### 12V wire cable

#### 2-wire

#### 4-wire



EAN	5999097907680	5999097907703
product code	ABLS12V-2WIRE	ABLS12V-4WIRE
wire	2	4 (+RGB)
length	200m	200m
diameter	0,3mm	0,3mm
LED strip type	12V	12V
carton EAN	5999097907697	5999097907710



## CONTROLLERS

The controllers that operate LED strips can be connected to single color and colorful (RGB) strips as well. They are necessary for the convenient and proper control of the LED strips.

### radio dimmer



EAN	5999562287125
product code	ABLS220VSCD-600W-RFC
color temp.	4000K
watt	max. 600W
IP	67
voltage	AC220-240V
carton EAN	5999562287132



EAN	5999562288627
product code	ABLS220VSCD-600W-RFC3528
color temp.	4000K
watt	max. 600W
IP	67
voltage	AC220-240V
carton EAN	5999562288634

### radio controller to 50m RGB strips



EAN	5999562287149
product code	ABLS220VRGB-50M-RFC
color temp.	RGB
watt	max. 600W
IP	67
voltage	AC220-240V
carton EAN	5999562287156

### manual controller to 20m RGB strips



EAN	5999562287163
product code	ABLS220VRGB-20M-ACC
color temp.	RGB
watt	max. 600W
IP	67
voltage	AC220-240V
carton EAN	5999562287170

The 20m RGB LED strip controllers are suitable to operate eight functions such as continuous illumination, fading, brightening, fast-, medium- and slow blinking or circulating lighting.

### AC plug AC220/DC220

The AC plugs can be used for 220V, 3528 and 5050 chip, single color LED strips.



EAN	5999562286364
product code	ABLS220V3528-ACPLUG
color temp.	4000K
watt	max. 600W
IP	67
voltage	AC220-240V
carton EAN	5999562286371

EAN	5999562286845
product code	ABLS220V5050-ACPLUG
color temp.	4000K
watt	max. 600W
IP	67
voltage	AC220-240V
carton EAN	5999562286852





## 220V ACCESSORIES

### extension cable



EAN	5999097907529
product code	ABLS220V3528-0.2M-EXT
length	0,2m
IP	65
type	short
carton EAN	5999097907536

EAN	5999097907543
product code	ABLS220V3528-1M-EXT
length	1m
IP	65
type	long
carton EAN	5999097907550



EAN	5999097908380
product code	ABLS220V5050-0.2M-EXT
length	0,2m
IP	65
type	short
carton EAN	5999097908397

EAN	5999097908403
product code	ABLS220V5050-1M-EXT
length	1m
IP	65
type	long
carton EAN	5999097908410

## CONNECTORS

The 2 and 4 pin connectors are designed to link 220V neutral white and RGB LED strips.

### 2 pin connector SMD3528



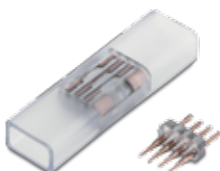
EAN	5999562286401
product code	ABLS220V3528-2PINCON
color temp.	4000K
IP	67
voltage	AC220-240V
carton EAN	5999562286418

### 2 pin connector SMD5050



EAN	5999562286388
product code	ABLS220V5050-2PINCON
color temp.	4000K
IP	67
voltage	AC220-240V
carton EAN	5999562286395

### 4 pin connector RGB



EAN	5999562286425
product code	ABLS220VRGB-4PINCON
color temp.	RGB
IP	67
voltage	AC220-240V
carton EAN	5999562286432



## end cap

The end caps are used to cover the ends of 3528 and 5050 chip 220V LED strips.



EAN	5999562286463
product code	ABLS220V3528-CUP
voltage	AC220-240V
carton EAN	5999562286470



EAN	5999562286883
product code	ABLS220V5050-CUP
voltage	AC220-240V
carton EAN	5999562286890

## mounting clips

The 220V LED strips can be easily installed with mounting clips that are available in different sizes to fit perfectly for the different strips.



EAN	5999562286449
product code	ABLS220V3528-CLIP
voltage	AC220-240V
carton EAN	5999562286456



EAN	5999562286869
product code	ABLS220V5050-CLIP
voltage	AC220-240V
carton EAN	5999562286876





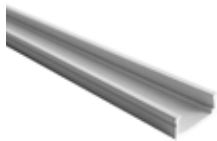
Aluminium profiles can be useful for furniture lighting, glass cabinet, counter lighting or ceiling decorating light. Accessories include end-caps, mounting clips or micro controllers with various functions.

## WALL



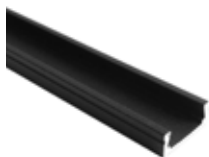
EAN	5999562289686	5999097910284
product code	AAP-N-1	AAP-N-2M
outer size	15.21×7.04mm	15,21 x 7,04 mm
strip profile	8-10mm	8-10mm
length	1m	2m

normal



EAN	5999097910369	5999097910406
product code	AAP-NWH-1M	AAP-NWH-2M
outer size	15,21 x 7,04 mm	15,21 x 7,04 mm
strip profile	8-10mm	8-10mm
length	1m	2m

white



EAN	5999097910345	5999097910383
product code	AAP-NBL-1M	AAP-NBL-2M
outer size	15,21 x 7,04 mm	15,21 x 7,04 mm
strip profile	8-10mm	8-10mm
length	1m	2m

black



EAN	5999562289709	5999097910321
product code	AAP-R-1M	AAP-R-2M
outer size	22,03 x 7,02 mm	22,03 x 7,02 mm
strip profile	8-10mm	8-10mm
length	1m	2m

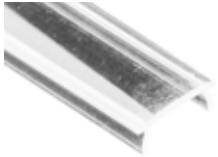
recessed



# LED STRIP ALUMINIUM PROFILE

## cover

The normal and recessed alu profiles have several different covers available in clear, frosted and milky versions.



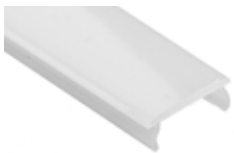
EAN	5999562289808	5999097911021
product code	AAP-NR-COV-C-1M	AAP-NR-COV-C-2M
length	1m	2m

clear



EAN	5999562289884	5999097911045
product code	AAP-NR-COV-F-1M	AAP-NR-COV-F-2M
length	1m	2m

frosted



EAN	5999562289907	5999097911069
product code	AAP-NR-COV-M-1M	AAP-NR-COV-M-2M
length	1m	2m

milky

## ACCESSORIES

### wall mounting clip



EAN	5999562289846	5999097910949
product code	AAP-N-CLIP	AAP-NBL-CLIP
color	white	black

### wall end cap



EAN	5999562289747	5999097910925
product code	AAP-N-CAP	AAP-NBL-CAP
color	white	black

### recessed end cap



EAN	5999562289761
product code	AAP-R-CAP
alu profile	recessed



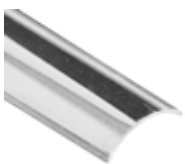
## CORNER



EAN	5999562289723	5999097910307
product code	AAP-C-1M	AAP-C-2M
outer size	16 x 16mm	16 x 16mm
strip profile	8-10mm	8-10mm
length	1m	2m

## cover

The covers of the corner alu profiles are available in clear, frosted and milky versions.



EAN	5999562289822	5999097910963
product code	AAP-C-COV-C-1M	AAP-C-COV-C-2M
length	1m	2m

clear



EAN	5999562289921
product code	AAP-C-COV-F-1M
length	1m

frosted

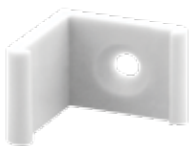


EAN	5999562289945	5999097910987
product code	AAP-C-COV-M-1M	AAP-C-COV-M-2M
length	1m	2m

milky

## ACCESSORIES

### end cap



EAN	5999562289860
product code	AAP-C-CLIP
alu profile	corner

### mounting clip



EAN	5999562289785
product code	AAP-C-CAP
alu profile	corner

### corner cover

The accessories of the recessed alu profiles are the corner covers to hide the edges of the profile. Available versions are outer, inner and straight.



EAN	5999562281079	5999562289969	5999562289983
product code	AAP-C-CORN-OUT	AAP-C-CORN-IN	AAP-C-CORN-ST
strip profile	8-10mm	8-10mm	8-10mm
type	outside	inside	straight



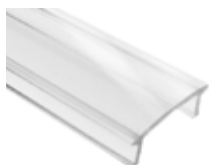
# LED STRIP ALUMINIUM PROFILE

## WALL



EAN	5999097910468	5999097910482
product code	AAP-W-1M	AAP-W-2M
outer size	40,7 x 17,9 mm	40,7 x 17,9 mm
strip profile	8-10-12mm	8-10-12mm
product	alu profile 1m	alu profile 2m

## cover



EAN	5999097910680	5999097910826
product code	AAP-W-COV-C-1M	AAP-W-COV-C-2M
product	clear 1m	clear 2m

clear



EAN	5999097910703	5999097910628
product code	AAP-W-COV-M-1M	AAP-W-COV-M-2M
color	milky 1m	milky 2m

milky

## ACCESSORIES

### mounting clip



EAN	5999097910741
product code	AAP-W-CLIP
product	wall mounting clip

### end cap



EAN	5999097910727
product code	AAP-W-CAP
product	wall end cap



## BENDABLE

Bendable aluminium profiles provide alternative for arches, coloumns or railings. Available in different lengths and with covers.



EAN	5999097910543	5999097910567
product code	AAP-B-1M	AAP-B-2M
outer size	18 x 5,6 mm	18 x 5,6 mm
strip profile	8-10-12 mm	8-10-12 mm
product	alu profile bendable 1m	alu profile bendable 2m

### cover



EAN	5999097910864	5999097910840
product code	AAP-B-COV-M-1M	AAP-B-COV-M-2M
color	cover - milky 1m	cover - milky 2m

### mounting clip



EAN	5999097910901
product code	AAP-B-CLIP
alu profile	bendable mounting clip

### end cap



EAN	5999097910888
product code	AAP-B-CAP
alu profile	bendable end cap

## FLOOR

Floor aluminium profiles can be installed in walls, furnitures or ceilings to create various decorative lighting solutions.



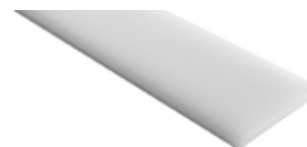
EAN	5999097910505	5999097910529
product code	AAP-F-1M	AAP-F-2M
outer size	19,2 x 8,5 mm	19,2 x 8,5 mm
strip profile	8-10 mm	8-10 mm
product	alu profile recessed 1m	alu profile recessed 2m

### end cap



EAN	5999097910802
product code	AAP-F-CAP
product	recessed end cap

### cover



EAN	5999097910789	5999097910765
product code	AAP-F-COV-M-1M	AAP-F-COV-M-2M
product	cover - milky 1m	cover - milky 2m



## IP68

The IP68 protected profiles are recommended for outdoor or underwater installation such as pools, garden lakes or practically for every in- and outdoor area.



EAN	5999097910420	5999097910444
product code	AAP-IP-1M	AAP-IP-2M
alu profile	17 x 14,9 mm	17 x 14,9 mm
strip profile	8-10-12 mm	8-10-12 mm
product	IP68 alu profile with cover 1m	IP68 alu profile with cover 2m

## ACCESSORIES

### mounting clip



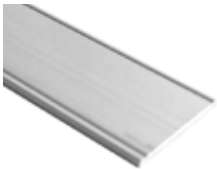
EAN	5999097910666
product code	AAP-IP-CLIP
alu profile	IP68 mounting clip

### end cap

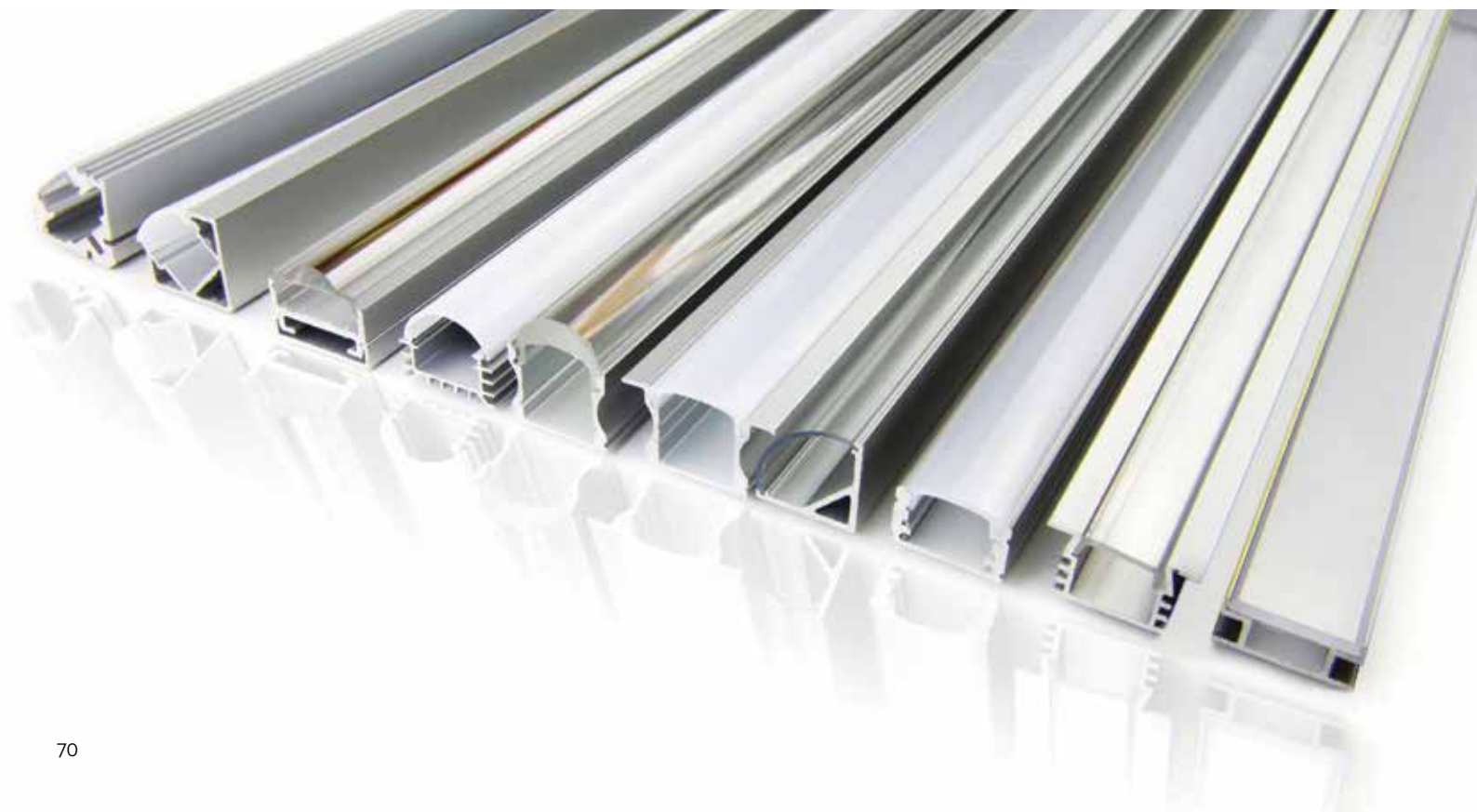


EAN	5999097910642
product code	AAP-IP-CAP
alu profile	IP68 end cap

### alu sheet



EAN	5999097910604	5999097913421
product code	AAP-IP-S-1M	AAP-IP-S-2M
product	alu sheet IP68 1m	alu sheet IP68 2m







## MINI CONTROLLERS

The LED strips can be operated by three types of controllers, the touch controllers operate from a shorter distance, while the infra and motion sensor controllers work well from a greater distance as well.

### touch controller



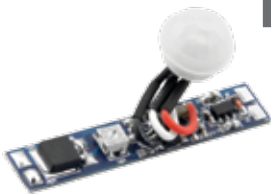
EAN	5999562281017
product code	AAP-MINICTRL-T
outer size	43×10mm
watt	96W
output current	max. 8A

### infra controller



EAN	5999562281031
product code	AAP-MINICTRL-IR
outer size	55×10mm
watt	96W
output current	max. 8A

### motion sensor controller



EAN	5999562281055
product code	AAP-MINICTRL-MOT
outer size	52×10mm
watt	96W
output current	max. 8A

